

# The ERIC-PPCI Newsletter

Issue 26—December 2017

## 2017 was another great year for ERIC-PPCI

2017 has been a fantastic year for ERIC-PPCI. We maintained the momentum of 2016 and averaged 105 patients per month across the trial. From the beginning of January, to the end of November we recruited 1159 patients. This incredible success is due to all the hard work of the research staff at all the sites. Thank you!



In 2016 we were able to increase the sample size from 2000 patients to 2600 patients, which is an amazing opportunity to provide a definitive answer to the research question once and for all. The trial reached the original goal of 2000 patients 12 months ahead of schedule when the 2000th patient was randomised in July 2017. At our current rate of recruitment we will reach the new sample size of 2600 in early 2018. Thank you all for a great year in 2017.

### Substantial Amendment 2

As you will know, we recently had an amendment approved that increases the sample size from 2000 patients to 2600 patients and added a template letter that can be used to contact patients who have been discharged before consent could be obtained.

Thank you all for work to implement the changes both in the R&D offices and with the research staff.

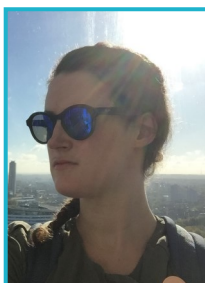
Please contact Addi at the information below if you have any further questions about this amendment.

### New staff profile: Ruth Canter

**Name:** Ruth Canter

**Position:** Trial Manager

**Previous job:** Study Manager at the Intensive Care National Audit & Research Centre (ICNARC)



**Interests:** Baking, films and TV shows, watching various sports, singing in a local choir, going to the theatre, eating good food

**Best Christmas cracker joke:**

What do you call a penguin in the middle of a desert? Lost

### Christmas closure dates

Please note that the ERIC-PPCI Clinical Trials Unit will be closed from **21 December to 1 January** inclusive.

If you have an urgent clinical query during this time please send it to Derek Hausenloy (d.hausenloy@ucl.ac.uk) or Rajesh Kharbanda (Rajesh.Kharbanda@ouh.nhs.uk).

#### Christmas Cuff Resupplies

Please let us know if you need additional cuffs to be sent to you by **Thursday, 14 December**.

Please send your orders to Lucy Collier (lucy.collier1@LSHTM.ac.uk) and the ERIC-PPCI inbox (ericppci@LSHTM.ac.uk)

### Contact us

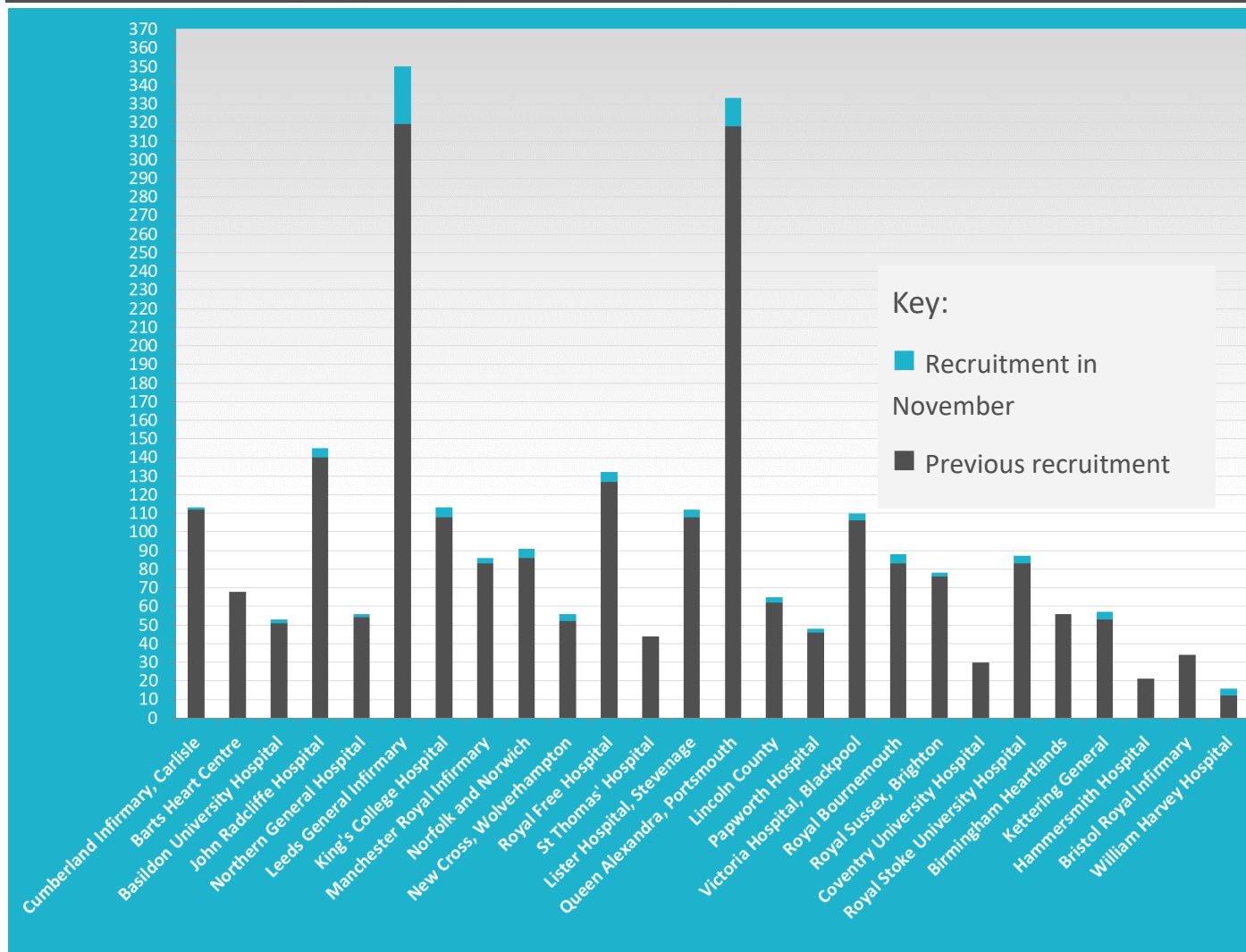
Tel: +44 (0)20 7927 2723

Fax: +44 (0)20 7927 2189

Email: [alexander.perkins@LSHTM.ac.uk](mailto:alexander.perkins@LSHTM.ac.uk) / [ericppci@LSHTM.ac.uk](mailto:ericppci@LSHTM.ac.uk)

Website: <http://ericppci.LSHTM.ac.uk>

## Recruitment updates



## ERIC-PPCI has recruited the 2400th patient

In November, 110 patients were recruited into ERIC-PPCI which brought us to a total of 2452 patients. Congratulations to Jack Pearse from Queen Alexandra Hospital in Portsmouth who recruited the 2400th patient on the 17th November.

The top recruiting sites this month were: Hannah, Michelle, Kathryn, Petra and the Leeds team (31 patients), Charlotte, Anne, Rosalynn, Leslie, Emma, Trevor, David and the Portsmouth team (15 patients), and a five way tie between the fantastic teams at John Radcliffe Hospital, the Royal Bournemouth Hospital, King's College Hospital, Royal Free Hospital, and Norfolk and Norwich Hospital (5 patients each). Thank you all for your continued hard work on ERIC-PPCI.

In November, Leeds recruited their 350th patient and we had a several fun patient IDs: Portsmouth recruited patient EP33333 and Leeds recruited patient EP12345. We hope you have all had a great November and wish you a very happy holiday season.

**Merry Christmas from the ERIC-PPCI Team!**